

IT 智能化最佳夥伴

METAGE 邁達特

MetaAge Corporation
(formerly known as : SYSAGE TECHNOLOGY CO., LTD.)
2023 Q2 Operating Results

2023/8/18

METAGE 邁達特

The best partner in implementing smart IT

MetaAge focuses on introducing the most advanced global software and hardware of information services to meet the requirements of corporate customers for information systems. At present, Smart IT is the most effective pathway for enterprises to improve competitiveness, in order to stand out in the competitive market. Additionally, MetaAge will continue to be the best partner in implementing smart IT by building on our experience in the field of information services, and by continuing to introduce global leading IT solutions, and improving the capabilities of technical services.

Agenda

1. 2023 Q2 Financial Results and Business Summary
2. Business Update
3. Q & A

Safe Harbor Notice

We have made forward-looking statements in the presentation. Our forward-looking statements contain information regarding, among other things, our financial conditions, future expansion plans and business strategies. We have based these forward-looking statements on our current expectations and projections about future events. Although we believe that these expectations and projections are reasonable, such forward-looking statements are inherently subject to risks, uncertainties, and assumptions about us.

We undertake no obligation to publicly update or revise any forward-looking statements whether as a result of new information, future events or otherwise. In light of these risks, uncertainties and assumptions, the forward-looking events might not occur and our actual results could differ materially from those anticipated in these forward-looking statements.



1. 2023 Q2 Financial Results and Business Summary

Statement of Comprehensive Income Highlights (Consolidated)

Amount : NT\$Thousand

	2023 Q1		2023 Q2		2022 Q2(Restated)	
Operating Revenue	3,401,208	100.0%	3,573,174	100.0%	3,030,380	100.0%
Operating Costs	(2,890,922)		(3,055,944)		(2,607,742)	
Gross Profit	510,286	15.0%	517,230	14.5%	422,638	13.9%
Operating Expenses	(336,356)	-9.9%	(374,924)	-10.5%	(288,958)	-9.5%
Net Operating Income	173,930	5.1%	142,306	4.0%	133,680	4.4%
Non-operating Income and expenses	82,368	2.4%	63,352	1.8%	(4,145)	-0.1%
Profit before Tax	256,298	7.5%	205,658	5.8%	129,535	4.3%
Profit	216,541	6.4%	164,095	4.6%	100,103	3.3%
Owners of the Parent	219,810	6.5%	163,379	4.6%	97,367	3.2%
Earnings Per Share(NT\$)(a)	1.17		0.87		0.52	

188,357

188,357

188,357

(a)Earnings Per Share was calculated based on total weighted-average number of ordinary shares outstanding(thousand shares)

Statement of Comprehensive Income Highlights (Consolidated)

Amount : NT\$Thousand

	2023 H1		2022 H1(Restated)	
Operating Revenue	6,974,382	100.0%	5,848,880	100.0%
Operating Costs	(5,946,866)		(5,043,378)	
Gross Profit	1,027,516	14.7%	805,502	13.8%
Operating Expenses	(711,280)	-10.2%	(577,543)	-9.9%
Net Operating Income	316,236	4.5%	227,959	3.9%
Non-operating Income and expenses	145,720	2.1%	6,288	0.1%
Profit before Tax	461,956	6.6%	234,247	4.0%
Profit	380,636	5.5%	185,253	3.2%
Owners of the Parent	383,189	5.5%	182,484	3.1%
Earnings Per Share(NT\$)(a)	2.03		0.97	
	188,357		188,357	

(a) Earnings Per Share was calculated based on total weighted-average number of ordinary shares outstanding(thousand shares)

Balance Sheet Highlights (Consolidated)

Amount : NT\$Thousand

	2023.06.30		2022.12.31		2022.06.30(Restated)	
Cash and cash equivalents	925,320	10%	784,073	9%	859,739	10%
Notes and accounts receivable, net (Including related parties)	2,681,524	29%	2,726,648	30%	2,593,262	31%
Inventories	3,353,239	36%	3,429,498	38%	2,961,689	35%
Property, plant and equipment	920,916	10%	926,433	10%	933,473	11%
Total assets	9,387,942	100%	9,130,803	100%	8,496,475	100%
Current liabilities	4,597,266	49%	4,264,270	47%	3,750,134	44%
Non-current liabilities	420,379	4%	461,586	5%	496,852	6%
Total Equity	4,370,297	47%	4,404,947	48%	4,249,489	50%
Total equity attributable to owners of parent	4,223,384	45%	4,242,237	46%	4,018,586	47%
Net Worth/Share(NT\$)	22.42		22.52		21.33	
Net worth per share was calculated based on total shares outstanding (thousand shares)	188,357		188,357		188,357	

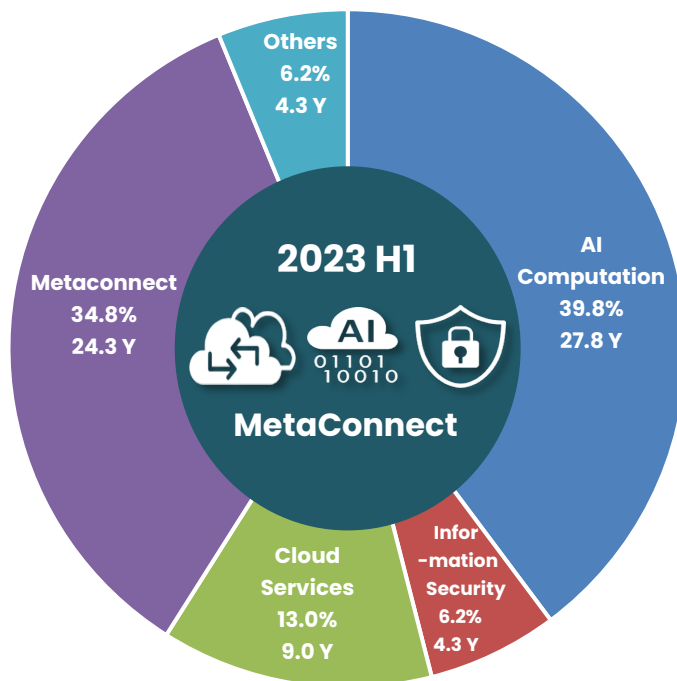
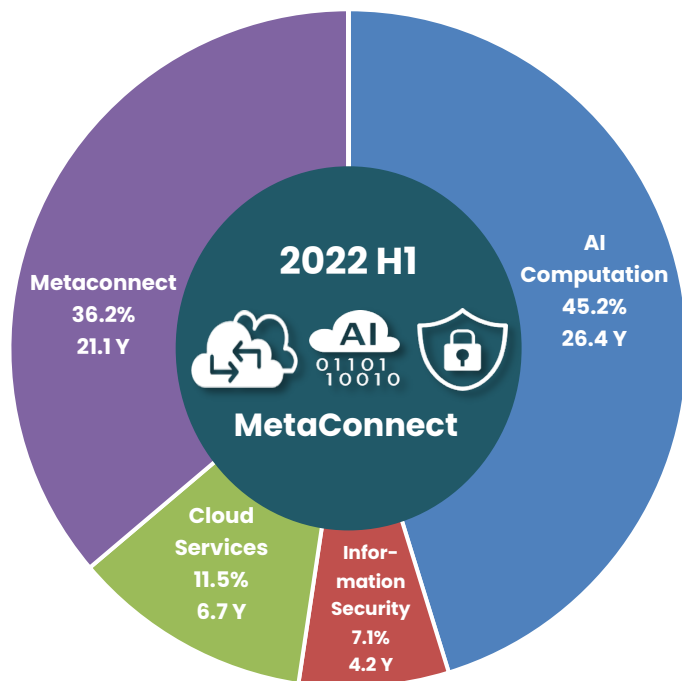
Key Financial Ratios

	2023.06.30	2022.12.31	2022.06.30
AR Turnover (Days)	71	86	85
Inventory Turnover (Days)	104	110	105
AP Turnover (Days)	62	59	59
Cash Conversion Cycle (Days)	113	137	131
ROE (annualized)(a)	14.5%	9.6%	10.8%
Current ratio	154%	164%	171%
Fin.Debt(b)/Total Assets	17%	19%	13%

(a) Annualized net income attributable to owners of parent / Average total equity attributable to owners of parent

(b) Fin.debt included long term and short term financial debts

Revenue Breakdown-By Applications



A low-angle, upward-looking photograph of several modern skyscrapers with glass and steel facades. The perspective creates a sense of height and scale. In the top-left corner, there is a decorative graphic consisting of several overlapping, semi-transparent triangles of varying shades of gray, some pointing upwards and others downwards, creating a dynamic, geometric pattern.

2. Business Update

Metaage Business Strategy



Cloud



Modern
Applications



01101
10010

Data Insight



Information
Security



IT Infrastructure




A low-angle, upward-looking photograph of several modern skyscrapers with glass and steel facades. The perspective creates a sense of height and scale. In the top-left corner, there is a semi-transparent graphic overlay consisting of several grey triangles of varying sizes and orientations, some pointing towards the center and others outwards.

3. Q&A

**Follow MetaAge to receive
the latest information.**



A low-angle, upward-looking perspective of several modern skyscrapers with glass facades. The buildings are arranged in a way that they seem to converge towards the top of the frame. The sky is a pale, hazy blue. Overlaid on the image are several semi-transparent red triangles of various sizes, some pointing upwards and others downwards, creating a sense of movement and direction.

邁向新里程
達到新領域
特寫新視野

METAGE 邁達特

Thank You

IT 智能化最佳夥伴